



WHAT'S INSIDE MATTERS®



**PROVIDING HIGH EFFICIENCY  
AND WORRY-FREE PERFORMANCE**

**M1200 HIGH-EFFICIENCY GAS FURNACES**



**80% AFUE TWO-STAGE, VARIABLE-SPEED**



80% AFUE HIGH-EFFICIENCY

## TWO-STAGE, VARIABLE-SPEED GAS FURNACES

**M**aytag, the name that stands for reliability and dependability, offers you the perfect choice for consistent home comfort.

Let cool winds blow outside, because your Maytag® furnace will provide a consistent temperature while improving comfort. The two-stage furnace works at a higher capacity on colder days or lower capacity on mild days to improve air circulation and minimize indoor temperature variations.

When you add a Maytag® two-stage gas furnace to your home, you invest in comfort and worry-free performance for years to come. Plus all Maytag® gas furnaces feature a limited lifetime heat exchanger warranty. All Maytag® furnaces are quality checked over 240 times and computer run-tested before for performance at the manufacturing facility.

Maytag® two-stage, variable-speed gas furnaces help solve common household comfort issues such as hot and cold spots and temperature swings. They operate at the most efficient level of comfort inside, no matter what the weather is outside.

The two-stage, variable-speed furnace works at a higher or lower capacity depending on the outdoor temperatures. Since there are fewer startup and shutdown cycles, the sound levels are also much lower than standard furnaces. Longer cycles improve air circulation and minimize temperature variations.

By mixing air from floor to ceiling, the variable-speed blower creates more uniform temperatures. Reducing air velocity also allows airborne particles and moisture to be captured at a higher rate, resulting in improved air filtration and reduced humidity levels.

If installed in SCAQMD only: This furnace does not meet the SCAQMD Rule 1111 14 ng/J NO<sub>x</sub> emission limit (14 ng/J), and thus is subject to a mitigation fee of up to \$450. This furnace is not eligible for the Clean Air Furnace Rebate Program: [www.CleanAirFurnaceRebate.com](http://www.CleanAirFurnaceRebate.com).

## INNOVATION & STYLE

Two piece door design enhances furnace appearance and uses captured screws to prevent losing door screws. Maytag® gas furnaces are also small in size making them ideal for tight spaces.

## SOUND QUALITY

The unique burner design and the insulated blower cabinet provide clean and quiet operation.

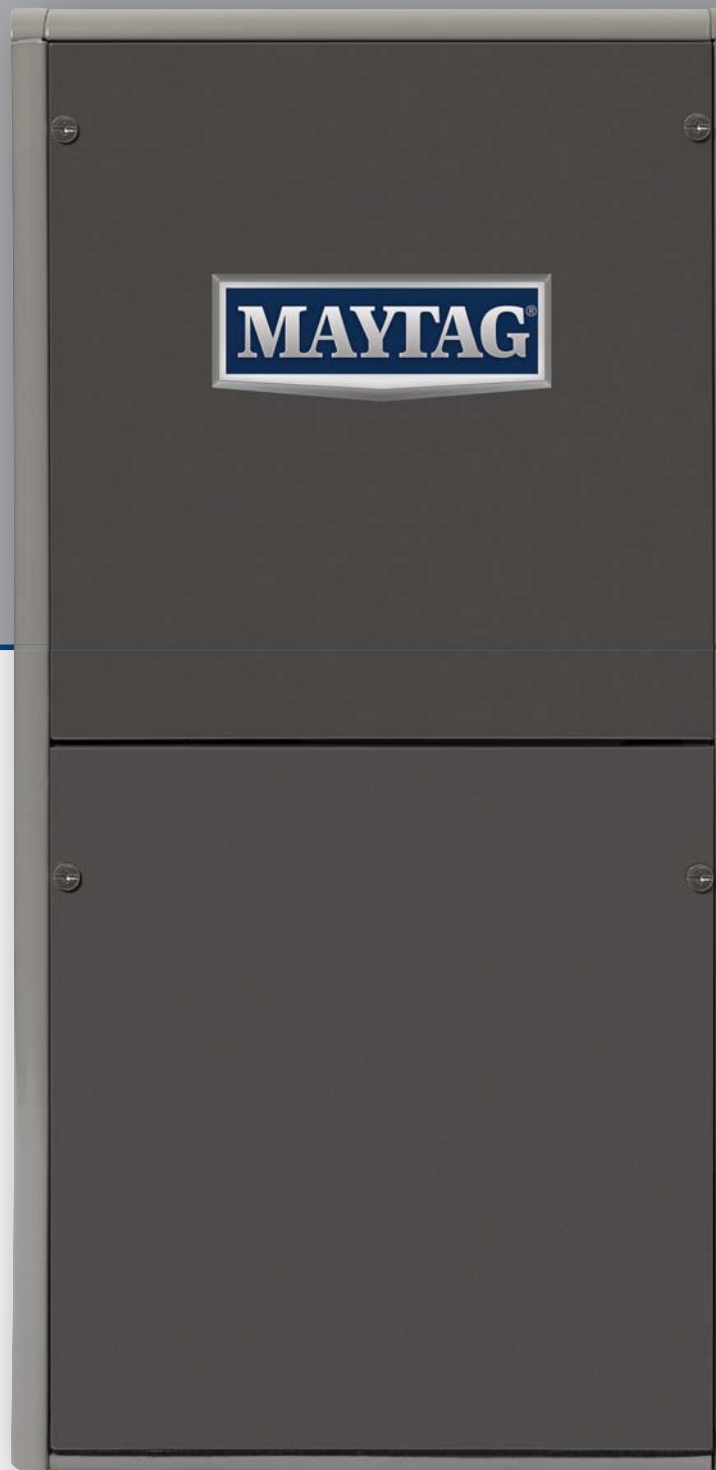
## iQ DRIVE® READY

Maytag® 80% AFUE two-stage, variable-speed gas furnaces are iQ Drive Ready. That means they are designed to seamlessly integrate with the Maytag® 20-SEER iQ Drive air conditioner or 18/19-SEER/10.0 HSPF iQ Drive heat pump, to create an ultra-high efficient system for your home. iQ Drive air conditioners and heat pumps achieve some of the industry's highest efficiency ratings – saving homeowners hundreds of dollars in energy costs per year over standard equipment.



A Maytag® iQ Drive air conditioner or heat pump utilizes inverter rotary technology to achieve ultra high efficiency levels. Traditional compressors just turn on and off, operating at 60 hertz when running. But iQ Drive inverter technology has almost infinite

modulation for a perfectly even variance. And it runs as low as 15 hertz, so it uses less power. Ask your Maytag® contractor or visit [www.maytagvac.com](http://www.maytagvac.com) for more information.



# CREATING TOTAL INDOOR COMFORT

## WITH COMFORT ACCESSORIES\*

**M**aytag offers whole-home indoor air quality solutions to reduce dust, mold, household allergens, and more through Partners Choice®. From hot and cold spots, to improving indoor air moisture levels, or simply controlling room temperatures through programmable thermostats, Maytag has a solution.

And, Partners Choice accessories are covered by a 12-year limited parts warranty when installed and registered with your new Maytag® furnace.

**Programmable Thermostats:** The thermostat automatically adjusts your indoor temperature to accommodate both your home and away schedules, thereby reducing energy costs.

**UV Air Treatment Systems:** UV object purifiers and Photo Catalytic Oxidation (PCO) units remove mold, bacteria, and viruses that are found in the air stream and odors from the home.

**Humidifiers:** Climates with dry air can irritate your skin and trigger allergies, as well as cause furniture and drywall to crack. A whole-house humidifier helps maintain appropriate moisture levels within your home.

**Electronic Air Cleaners:** Improve indoor air filtration with an electronic air cleaner that can remove 95% of household allergens, such as dust mites, pollen and smoke.

For more information about these and other accessory products, please consult your select Maytag® heating and cooling contractor.

\* All Partners Choice accessories that are purchased and installed with Maytag® system equipment are covered by the system warranty, when registered. Any maintenance parts of accessories are not covered under warranty. (eg. Filters, etc.)

### INDOOR COILS

Your gas furnace is only one part of the comfort system that affects your energy savings. Indoor coils from Maytag can help ensure the optimum performance of your comfort system. Maytag recommends replacing the existing indoor coil with a matched Maytag® coil to guarantee maximum efficiency and performance of your outdoor unit.

Maytag® indoor coils are matched with all models of Maytag® split-systems. Our coils offer a 12-Year Limited Warranty when installed with a Maytag® heating or cooling system.

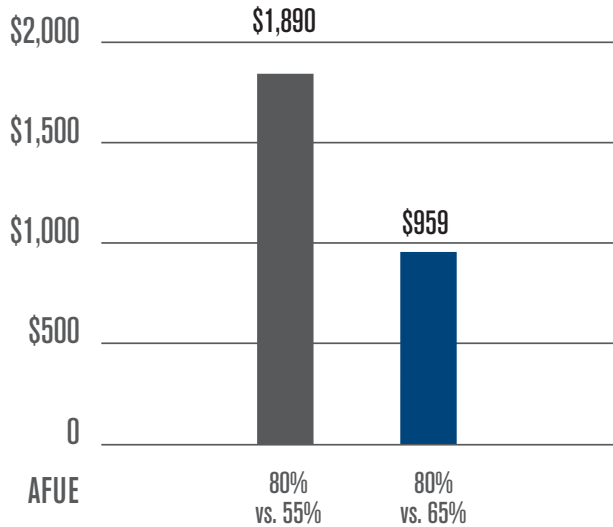
Your contractor will help you choose the appropriate coil for your home.





## ENERGY SAVING

Maytag® furnaces are rated in Annual Fuel Utilization Efficiency (AFUE) units. A higher AFUE rating makes it easier for your system to perform more efficiently by delivering more heat to your home and lowering your utility bills. You can be sure in the total comfort of your home that Maytag® furnaces will save you more.



Three-Year Heating Savings of compared units - dollar amounts computed at \$.092 ccf, for 2,500 full-load heating hours and a system rated at 60,000 Btuh. Actual savings vary depending on climate conditions, fuel rates, and patterns of usage according to individual lifestyle.

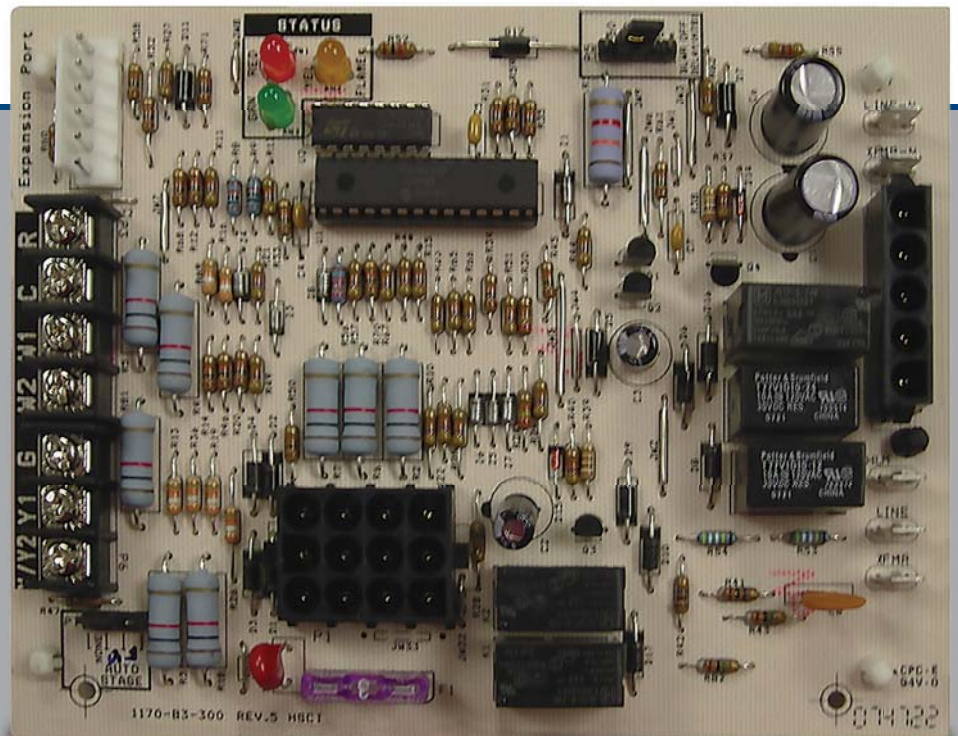
## ADVANCED TECHNOLOGY

Maytag® gas furnaces with SmartStart® control boards provide extended life to igniters in furnaces using hot surface ignition technology. They are programmed to learn the heat-up characteristics of the igniter, then adapt the ignition time to the characteristics of the furnace so the igniter is energized appropriately.

Maytag® gas furnaces employ hot surface ignition systems (HSI). These use an igniter that, when energized, rapidly generates an intense heat sufficient to ignite the fuel gas. These systems are safe, well proven and have a good track record.

The SmartStart control board contains a program that varies the igniter heat-up time interval. It learns the heat-up characteristics of the igniter in the furnace by searching for the threshold of ignition failure. It then adjusts the heat-up interval on the next trial accordingly. This upgrade has been accomplished by microchip software reprogramming. The introduction of this control represents a significant advance in HSI furnace technology. All Maytag® gas furnaces include the SmartStart control board.

## MAYTAG®'S SMARTSTART CONTROL BOARD



# MAYTAG® GAS FURNACES WITH ECM BLOWER MOTORS

## FOR COMFORT AND BETTER INDOOR AIR QUALITY

**M**aytag® furnaces with ECM blower motor technology do more than create a comfortable home. They also reduce your energy bills.

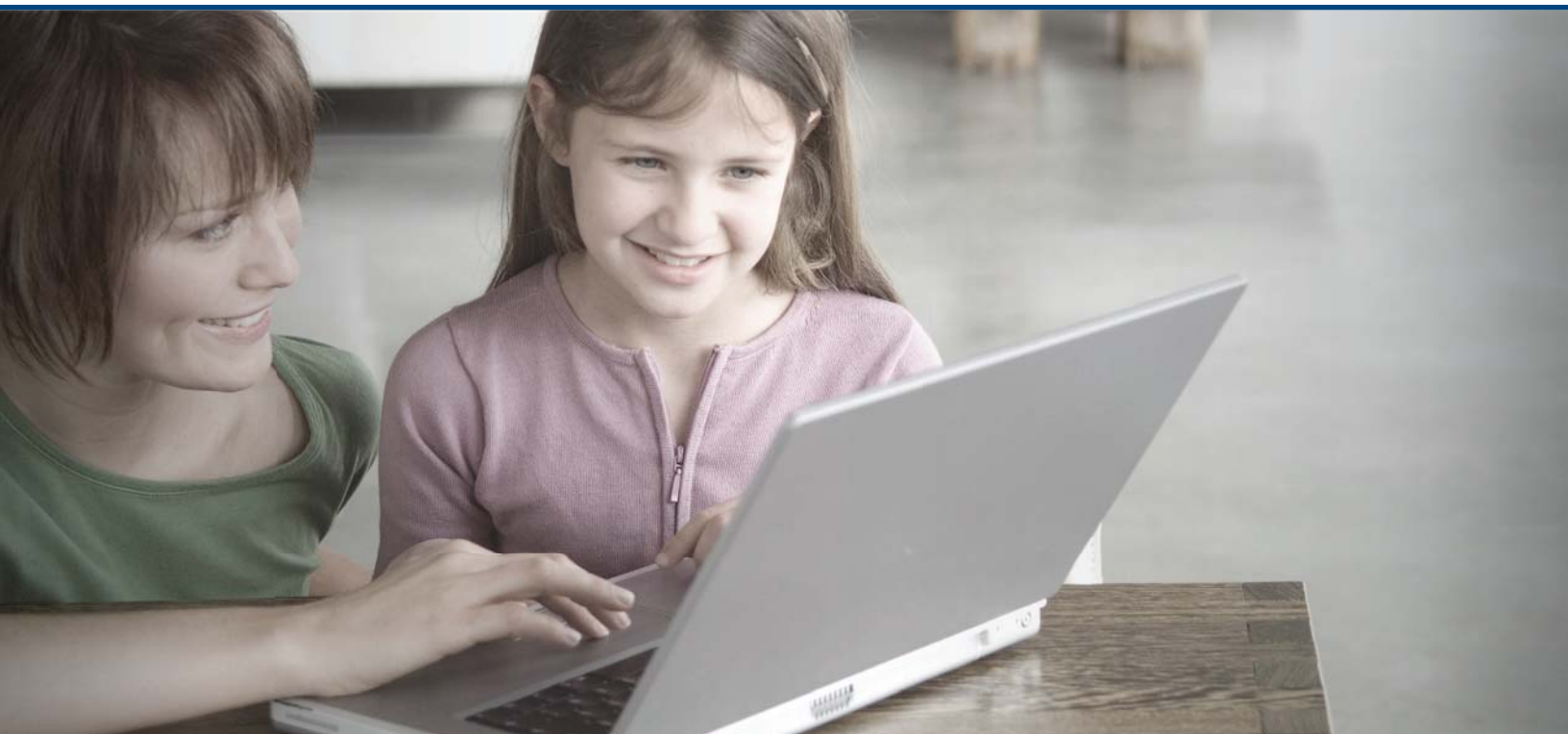
### **ECM BLOWER MOTOR TECHNOLOGY.**

This technology under normal operating conditions ensures constant comfort for the homeowner because the motor will automatically maintain its programmed level of airflow even if there are dynamic changes in static pressure. Better indoor air quality can be achieved quietly and inexpensively with the ECM blower motor because it can be set to run continuously at reduced airflow levels, between heating or cooling cycles. This allows the air to be filtered without excessive drafts and without sacrificing efficiency.

When you choose a variable-speed model, you get even more comfort features. A variable-speed ECM blower motor helps dehumidify your home to promote healthier indoor air quality.

Maytag® furnaces with ECM technology use a brushless DC motor instead of a standard PSC motor. This more efficient motor is combined with advanced programming controls for an incredibly sophisticated design that creates superior home comfort and efficiency.

Your Maytag® contractor can help you find the gas furnace that's right for you. Maytag® gas furnaces are available in multiple configurations – to meet your heating, efficiency and budgetary needs.



# MOTOR COMPARISONS AT A GLANCE

Standard PSC Motor	Fixed-Speed ECM Motor
Minimal speed ranges.	16 heating speeds and 16 cooling speeds.
Lower efficiencies.	Highly efficient; can boost outdoor unit SEER by up to one point.  Uses less electricity during heating and cooling cycles than conventional blower motor.
No programmable features.	Can program speeds to match home's unique needs.

Standard PSC Motor	Variable-Speed ECM Motor (includes fixed-speed benefits)
Runs at one speed and cycles on and off.	Automatically changes its speed and makes adjustments to maintain constant airflow.
Poor dehumidification.	Helps control humidity levels, and improves dehumidification.
Creates hot and cold spots in home.	Helps mix air to reduce hot and cold spots while reducing stagnation.
Noisy. Runs more often at higher, louder speeds and makes an abrupt change in sound when system cycles on and off.	Quiet. Motor design produces very low torque wave. Motor ramps up to speed, minimizing abrupt sound changes.

## FIXED- VERSUS VARIABLE-SPEED

**Fixed-speed technology** means that the motor will run at a speed set by the installer. With ECM technology your Maytag® contractor can choose from 16 heating speeds and 16 cooling speeds, plus additional low-operation speeds, to find the exact right operating speeds for your home.

**Variable-speed technology**, on the other hand, means the system will automatically utilize several different speeds for optimal comfort. For example, a variable-speed furnace can help compensate for a dirty air filter by automatically increasing its speed to maintain airflow. It also ramps up to eliminate the sudden blast of air found in conventional systems, and can enhance comfort and dehumidification to provide healthier indoor air quality.

## BUILT FOR EFFICIENCY. BUILT TO LAST.

Maytag® M1200 series of products offer a 12-Year Worry-Free Limited Warranty on parts and a Limited Lifetime Heat Exchanger Warranty when the product is registered.\*

Plus, our Dependability Promise states that your entire unit will be replaced if the heat exchanger fails within the first 12 years of purchase, registration required.\*



Ask your select Maytag® heating and cooling contractor or visit us at [www.maytaghvac.com](http://www.maytaghvac.com) for warranty details.

\*Applicable to the original owner.



### WHAT'S INSIDE MATTERS®



Specifications and illustrations subject to change without notice and without incurring obligation. SmartStart is a registered trademark of Maytag Corporation. iQ Drive® and ecoLogic® are registered trademarks of Nortek Global HVAC, LLC. Printed in the U.S.A.

[maytaghvac.com](http://maytaghvac.com)

®/TM/© 2021 Maytag. All rights reserved.  
Manufactured under license by Nortek Global HVAC, LLC, Missouri, USA.  
Limited warranty provided by the manufacturer.

977D-0821