



WHAT'S INSIDE MATTERS®



PROVIDING COMFORT, QUALITY

AND WORRY-FREE PERFORMANCE

M1200 COMFORT SYSTEMS



14 - 15 SEER ▪ LARGE PACKAGED PRODUCTS



MAYTAG® M1200 EXTRA-HIGH EFFICIENCY

MAYTAG® M1200 15 SEER/81% AFUE TWO-STAGE, VARIABLE-SPEED GAS/ELECTRIC PACKAGED SYSTEMS

Unlike most heating and cooling systems, which are divided into outdoor and indoor sections, a “packaged” system includes all the components necessary to heat and/or cool your home in one, convenient unit. The Maytag® 15 SEER/81% AFUE two-stage, variable-speed gas/electric packaged system combines the electric cooling convenience of an air conditioner with the gas-heat energy-efficiency of a furnace. It operates at lower capacity during mild summer days and at full capacity during hotter ones. Because this unit runs at a reduced capacity, it provides better comfort and performs more quietly than single-stage units.

Two-stage, variable-speed units improve air circulation by minimizing temperature variations and reducing hot and cold spots. When the fan runs continuously, it reduces electrical consumption by almost 80% over products with conventional blowers.

RELIABLE PERFORMANCE

When you add a Maytag® packaged system to your home, you invest in comfort and worry-free performance for years to come. Maytag® packaged systems have been carefully designed and engineered to give you outstanding energy efficiency and years of trouble-free operation.

ADVANCED TECHNOLOGY

These gas/electric packaged systems feature the SmartStart® control board. It learns the igniter's heat-up characteristics. It then adapts the ignition time to the packaged system's characteristics, resulting in extending the life of the igniter.

If installed in SCAQMD only: This gas/electric packaged system does not meet the SCAQMD Rule 1111 14 ng/J NOx emission limit (14 ng/J), and thus is subject to a mitigation fee of up to \$450. This gas/electric packaged system is not eligible for the Clean Air Furnace Rebate Program: www.CleanAirFurnaceRebate.com.

DURABILITY AND STYLE

Maytag® packaged systems feature polyester, urethane-coated galvanized steel with a 950-hour salt spray finish, which protects the unit from corrosion 50% better than other coatings.

QUIET COMFORT

The high-efficiency condenser motor and fan blades provide quiet operation and low vibration.



The two-stage Copeland Scroll® Compressor works with the variable-speed indoor section to decrease humidity levels and reduce hot and cold spots



ENERGY-EFFICIENT AND EARTH-FRIENDLY

Maytag® 15 SEER/81% AFUE two-stage, variable-speed gas/electric packaged are ecoLogic rated. ecoLogic® products are the most energy-efficient, environmentally responsible products Maytag offers.

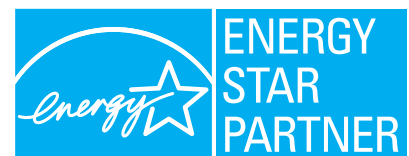


COIL TECHNOLOGY

These packaged systems feature enhanced evaporator coils for increased resistance to corrosion.

ENERGY STAR®

15 SEER/81% AFUE two-stage, variable-speed gas/electric packaged meet the ENERGY STAR Certification requirements. ENERGY STAR certification is awarded to products designed to reduce energy consumption and utility costs. To qualify, packaged systems must have a Seasonal Energy Efficiency Ratio (SEER) rating of 15.0 or higher and an Energy Efficiency Ratio (EER) of 12.0 or higher.



TWO-STAGE, VARIABLE-SPEED TECHNOLOGY

PACKAGED PRODUCTS FOR TOTAL HOME COMFORT

Maytag, the name that stands for reliability and dependability, offers you the perfect choice for consistent home comfort.

Let cold winds blow outside, because your Maytag® packaged system will provide a consistent temperature while improving comfort. The two-stage packaged system works at a higher capacity on colder days or lower capacity on mild days to improve air circulation and minimize indoor cold and hot spots.

When you add a Maytag® two-stage packaged system to your home, you invest in comfort and worry-free performance for years to come. All Maytag® packaged systems are quality checked and computer run-tested for performance at the manufacturing facility. Plus all Maytag® gas/electric packaged systems feature a limited lifetime heat exchanger warranty.

Maytag® two-stage, variable-speed packaged systems help solve common household comfort issues such as temperature and humidity. They operate at the most efficient level of comfort inside, no matter what the weather is outside.

The two-stage, variable-speed packaged system works at a higher or lower capacity depending on the outdoor temperatures. Since there are fewer startup and shutdown cycles, the sound levels are also much lower than standard packaged systems. Longer cycles improve air circulation and minimize temperature variations.

By mixing air from floor to ceiling, the variable-speed blower creates more uniform temperatures. Reducing air velocity also allows airborne particles and moisture to be captured at a higher rate, resulting in improved air filtration and reduced humidity levels.



MAYTAG® 14 SEER HIGH-EFFICIENCY

GAS/ELECTRIC PACKAGED SYSTEMS

14 SEER/81% AFUE FIXED-SPEED GAS/ELECTRIC PACKAGED SYSTEM*

You can always look to Maytag to make your life just a little more livable. Maytag® gas/electric packaged systems work seamlessly and efficiently to increase your comfort at home. These units are designed to be quiet and energy efficient while providing comfort and dependability. Fixed-speed direct-drive motor provides higher torque and operating speeds for improved air flow capacity. Smoother motor operation reduces noise and lowers winding temperatures that help to extend bearing-life of the motor.

A gas/electric packaged system combines the convenient electric cooling of an air conditioner with the energy-efficient gas heat of a furnace, all in one space-saving outdoor unit.

Maytag® gas/electric packaged systems are built using proven, reliable parts. Each part is examined

carefully with our rigorous quality check process. More than just better indoor comfort; we want you to feel comfortable investing in a product that will perform when you need it most.

Your select Maytag® heating and cooling contractor will work with you to determine the appropriate packaged product for your home.

* If installed in SCAQMD only: This gas/electric packaged system does not meet the SCAQMD Rule 1111 14 ng/J NOx emission limit (14 ng/J), and thus is subject to a mitigation fee of up to \$450. This gas/electric packaged system is not eligible for the Clean Air Furnace Rebate Program: www.CleanAirFurnaceRebate.com.

MAYTAG'S COMFORT ACCESSORIES

Maytag offers whole-home indoor air quality solutions to reduce dust, mold, household allergens, and more. From hot and cold spots, to improving indoor air moisture levels, or simply controlling room temperatures through program thermostats, Maytag has a solution. Turn your house into a home.

Maytag® accessories are covered by a 12-year limited parts warranty when installed and registered with your new Maytag® packaged system.



MAYTAG® 14 SEER HIGH-EFFICIENCY FIXED-SPEED

HEAT PUMP PACKAGED PRODUCTS

14 SEER/8.0 HSPF PACKAGED HEAT PUMP

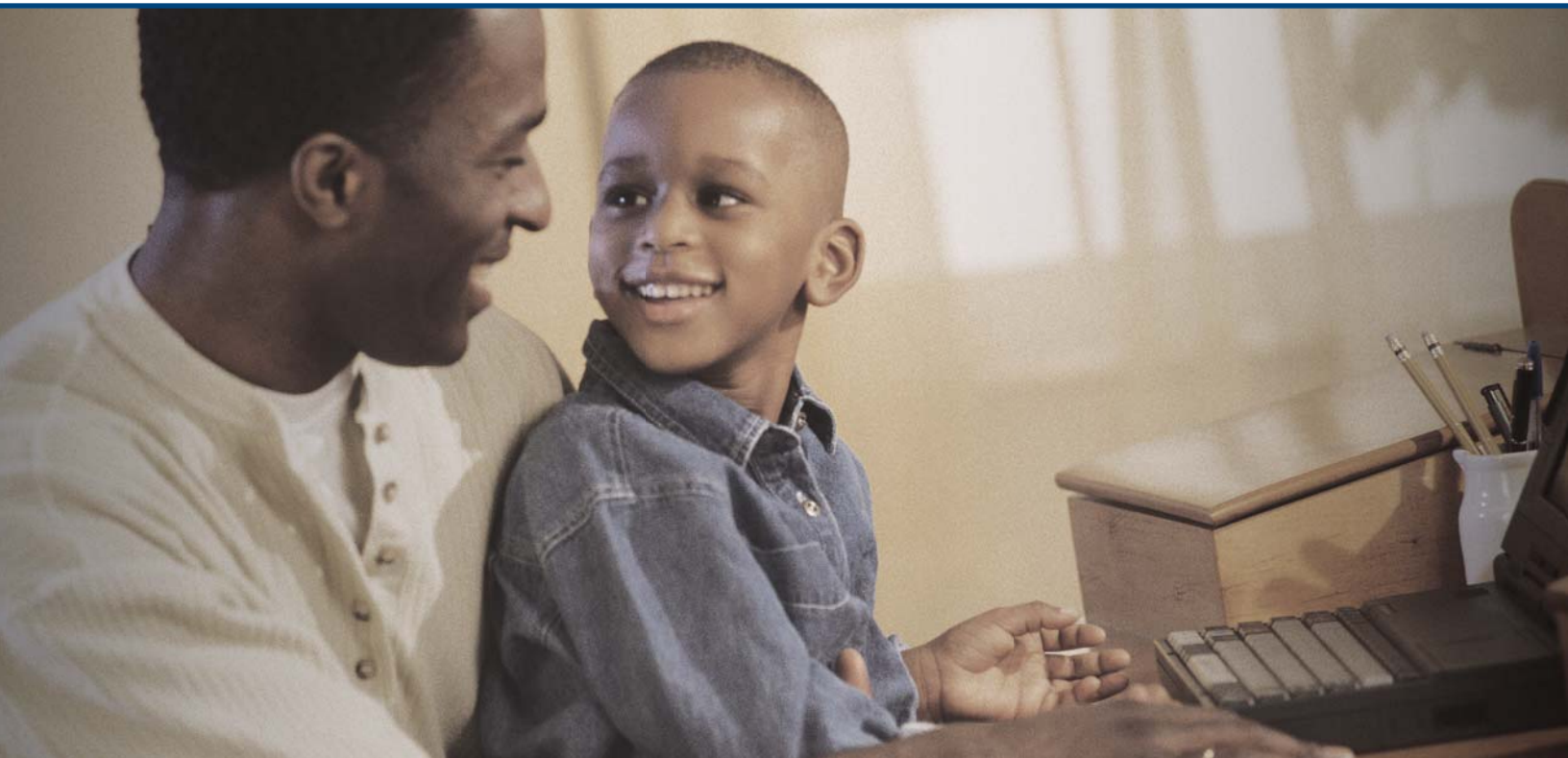
Total home comfort depends on many variables. Variables such as your home's square footage, number of floors, the sun's exposure on your home, the area of the country your home is located in, materials your home was constructed from, and your own personal comfort choices.

Depending on structural limitations and available space, packaged systems can be installed on the roof or at ground level on a slab. The choice in a packaged system will either be a heat pump, an air conditioner or a combination furnace and air conditioner called a gas/electric packaged system.

Typically, in milder climates, heat pumps will suffice to perform double duty. Even if temperatures are near freezing, they can extract heat from outside air, then transfer it inside to become a highly energy-efficient heat source. Similarly, by reversing the flow

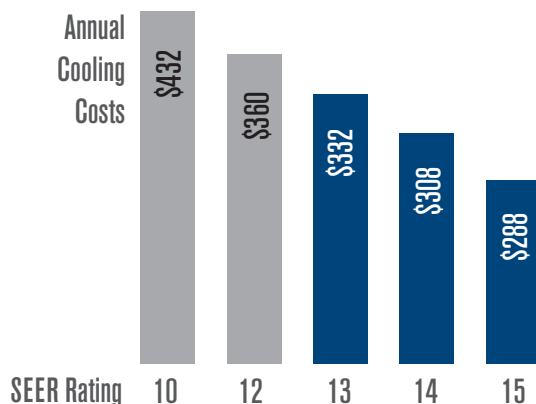
of refrigerant with a switchover valve, a heat pump can also extract heat from the inside, then transfer it outside to cool the house. In the case of a packaged air conditioner, it provides cooling and warmth if needed by a electric heating strip. Where climates require more heating capacity, a combination air conditioner and gas furnace packaged unit, "gas pack," delivers improved energy efficiency.

Fixed-speed blower technology under normal operating conditions ensures constant comfort for the homeowner because the motor will automatically maintain its programmed level of airflow even if there are dynamic changes in static pressure. Better indoor air quality can be achieved quietly and inexpensively with the fixed-speed motor because it can be set to run continuously at reduced airflow levels between heating or cooling cycles. This allows the air to be filtered without excessive drafts and without sacrificing efficiency.



ENERGY SAVING

Maytag® packaged systems are rated in both Seasonal Energy Efficiency Ratio (SEER) and Annual Fuel Utilization Efficiency (AFUE). Simply put, SEER measures the unit's cooling efficiency and AFUE measures the unit's heating efficiency. In both cases, the higher the numbers the more efficient the unit and the more money you'll save on energy. Heat pumps have an additional rating called Heating Seasonal Performance Factor (HSPF). It is a measure of the average number of Btu of heat delivered for every Watt-hour of electricity used by the heat pump over the heating season.



Three-Year Heating Savings of compared units - dollar amounts computed at \$.092 ccf, for 2,500 full-load heating hours and a system rated at 60,000 Btuh. Actual savings vary depending on climate conditions, fuel rates, and patterns of usage according to individual lifestyle.

ADVANCED TECHNOLOGY

On gas/electric packaged systems, the SmartStart® control board learns the igniter's heat-up characteristics. It then adapts the ignition time to the packaged systems characteristics, resulting in extending the life of the igniter, the most abused component.

The SmartStart control board contains a program that varies the igniter heat-up time interval. It learns the heat-up characteristics of the igniter in the packaged systems by learning and adapting to your home's unique characteristics. It then adjusts the heat-up interval on the next trial accordingly. This is accomplished by microchip software programming.



ENVIRONMENT SAVING

Awarded by the U.S. Department of Energy and the Environmental Protection Agency for helping to conserve energy, promote cleaner air, and prevent global warming.



ECOLOGIC® SEAL

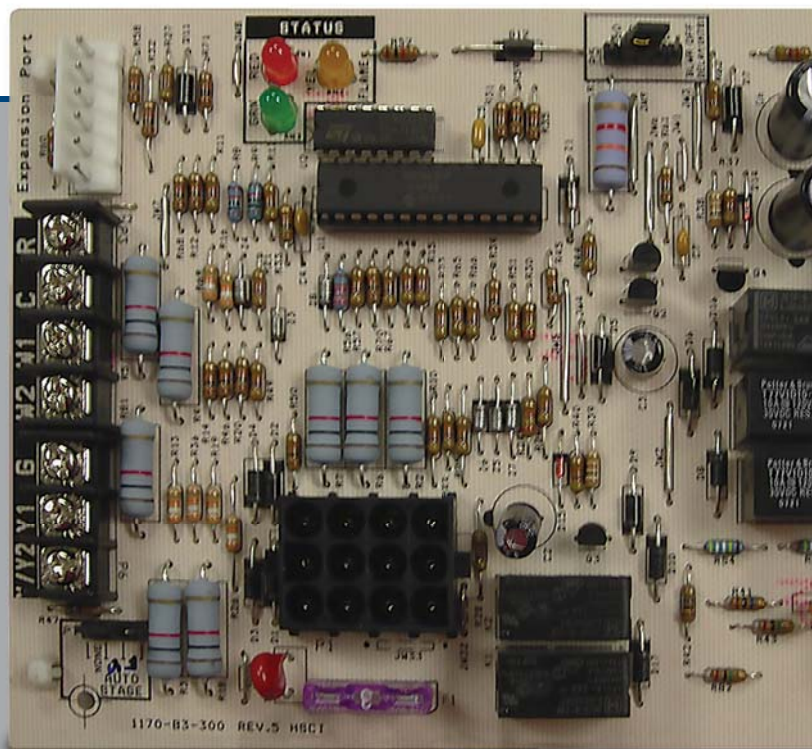
Only the most energy-efficient, most environmentally responsible units receive our ecoLogic seal of quality.

ENVIRONMENTALLY SMART

Maytag® packaged systems feature a wire coil guard coated with earth friendly epoxy and a plastic mesh hail guard that will never rust. They protect the coil from being damaged by balls, lawnmowers and hail etc.

ADVANCED COIL TECHNOLOGY

All Maytag® packaged systems features enhanced evaporator and condenser coils to better combat corrosion.



PEACE OF MIND

This Maytag® series of products offer a 12-Year Worry-Free Limited Warranty on parts and a Limited Lifetime Heat Exchanger Warranty on gas/electric and iHybrid® packaged systems when the product is registered.*

Plus, our Dependability Promise states that your entire unit will be replaced if the compressor or heat exchanger fails within the first 12 years of purchase, when registered.*

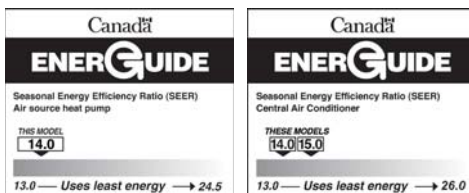
*Applicable to the original owner.



Ask your select Maytag® heating and cooling contractor or visit us at maytaghvac.com for warranty details.



WHAT'S INSIDE MATTERS®



maytaghvac.com

®/TM/© 2022 Maytag. All rights reserved.
 Manufactured under license by Nortek Global HVAC, LLC, Missouri, USA.
 Limited warranty provided by the manufacturer.

© Nortek Global HVAC, LLC 2022. All rights reserved.

Specifications and illustrations subject to change without notice and without incurring obligation. Copeland Scroll is a registered trademark of Emerson Climate Technologies, Inc. ecoLogic® is a registered trademark of Nortek Global HVAC, LLC. SmartStart is a registered trademark of Maytag Corporation. Printed in the U.S.A. © Nortek Global HVAC, LLC 2022. All rights reserved.